



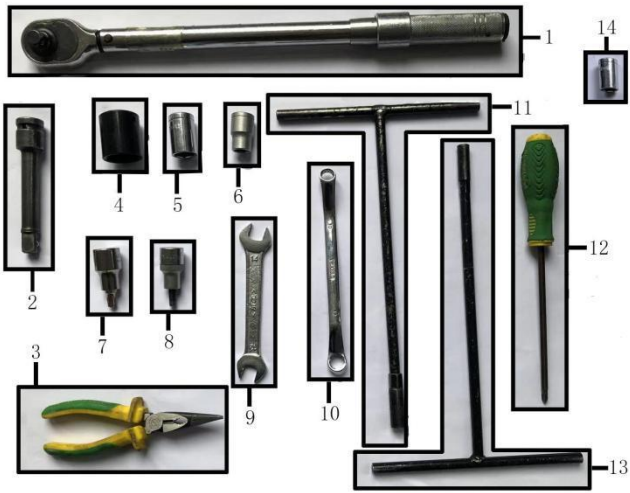
KAYO MOTO

AU150

Assembly Manual



WWW.KAYOMOTO.COM



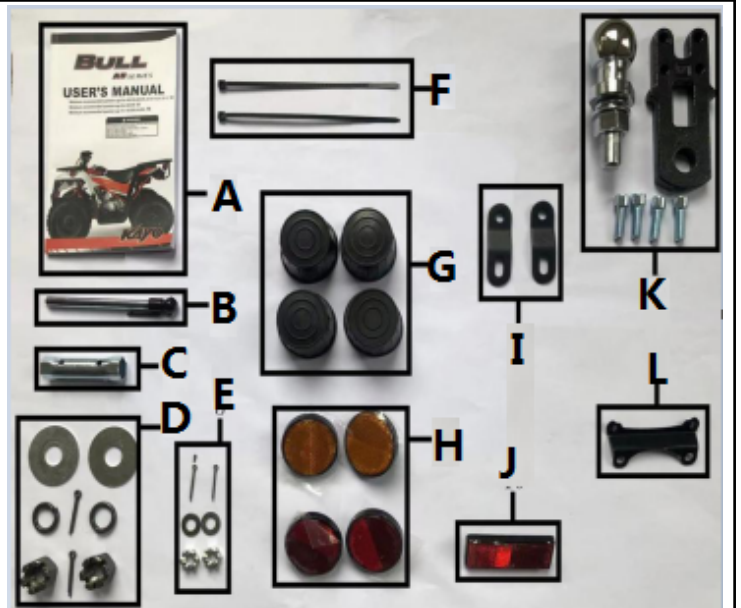
- ① Torque wrench
- ② Additional rod for electric wrench socket
- ③ Needle nose pliers
- ④ 27mm socket
- ⑤ 14mm socket
- ⑥ 12mm socket
- ⑦ 8mm hexagon socket
- ⑧ 6mm hexagon socket
- ⑨ No. 12-14 wrench
- ⑩ No. 10-12 wrench
- ⑪ No. 10 T-socket
- ⑫ Phillips screwdriver
- ⑬ No. 8 T-socket
- ⑭ 17mm socket

1. The above picture shows the tools needed to unpack and install the vehicle



2. Remove the straps and cardboard cover.

3. Take out the parts attached on the vehicle and the packaging iron frame, remove the iron frame screws, wait for subsequent installation.

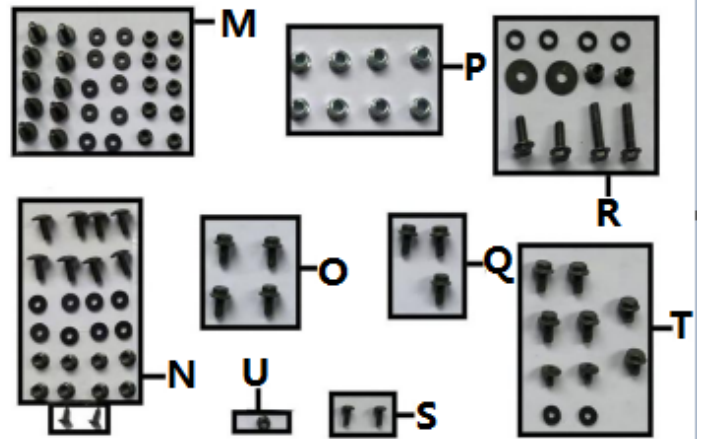


5. Above photo shows the accessories in the carton. Please read the user's manual(A) before assembling.



4. The parts shown above need to be subsequently installed on the vehicle.

	Name	Quantity	
A	User's manual	1	
B	Air pressure gauge	1	
C	Spark plug socket	1	
D	Rear axle hardware	slotted nut M18*1.5	2
		cotter pin 4*28	2
		dust cap washer $\Phi 18.5*53*2$	2
		spring washer $\Phi 18*27*4.5$	2
E	Steering pull rod hardware	slotted nut	2
		washer $\Phi 10*20*2$	2
		cotter pin 2.5*24	2
F	Cable tie	2	
G	Rubber dust cap	4	
H	Reflector	4	
I	Front bumper joint plate	2	
J	Rear central reflector	1	
K	Trailer linkage ball assy	1	
L	Gear indicator bracket	1	
M	Rear side plastics hardware	screw M6*16	6
		rubber Washer $\Phi 5.5*15*2$	6
		nut M6	6
N	Front side plastics hardware	screw M6*16	6
		rubber Washer $\Phi 5.5*15*2$	6
		nut M6	6
O	Rear rack bolt M8*16	4	
P	Front rim lock nut M10*1.25	8	
Q	Sub-frame bolt M8*16	3	
R	Front rack hardware	Bolt M8*40	2
		Nut M8	2
		Bolt M8*25	2
		Rubber washer $\Phi 9*16*2$	4
		Washer $\Phi 9*16*2$	2
S	Gear indicator screw M5*16	2	
T	Front bumper hardware	Bolt M8*12	2
		Bolt M8*16	4
		Screw M6*12	2
		Rubber washer $\Phi 5.5*14.5*2$	2
U	Rear reflector nut M5	1	



6. The picture shows the details of the hardware in the accessory box



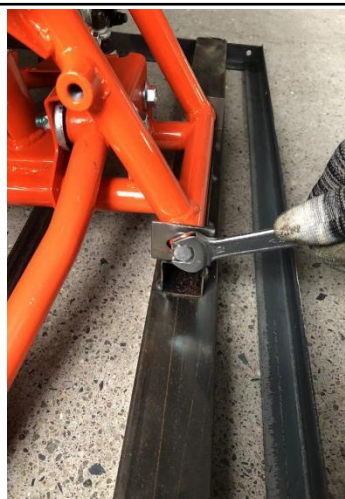
7. Install gear indicator bracket(L), use tool ①⑧ to lock the handlebar clamps, the distance between the two ends of the mark is close, tighten evenly, first start by hand tightening all four clamp bolts. (The handlebar is tilted 3-5° vertically to the rear after installation, and the torque is required to be 25-30N·m)



8. Use tool ⑫ to tighten the gear indicator screw (S).



9. Use tool ⑫ to install the combination switch



10. Use tool ⑨⑩ to remove the fixing screws of the iron frame.



11. Put the vehicle on the stand for easy installation of other accessories.



12. Install slotted nut and washer(E) of steering pull rod, use tool ①⑭ to tighten, and insert the cotter pin(E), the bending angle is greater than 180°. (torque requirement 49-59 N m)



13. Use tool ⑫ to install the hardware of front & rear side plastics(M)(N) and tighten them.



14. Use tool ①⑥ to tighten the bolts of front



15. Use tool ⑩⑪ to tighten front rack hardware(R).

bumper (T) (torque requirement is 25-30N.m) and use ⑫ to install the front bumper plastics cover.



16. Install the sub-frame, use tool ①⑥ to tighten the sub-frame bolt(Q). (torque requirement 25-30N.m)



17. Use tools ①⑥ to tighten the bolt on rear rack (O). (torque requirement is 25-30N.m)



18. Take out reflectors(H) from the accessory box and install them on the front and rear racks.



19. Use ①⑦ to tighten the screws of trailer linkage ball(K). (torque requirement is 25-30 N m)



20. Please refer to user's manual (A) for air pressure requirements. Use compressed air to inflate the tires and use the air pressure gauge (B) to inflate to the standard value of 5psi.



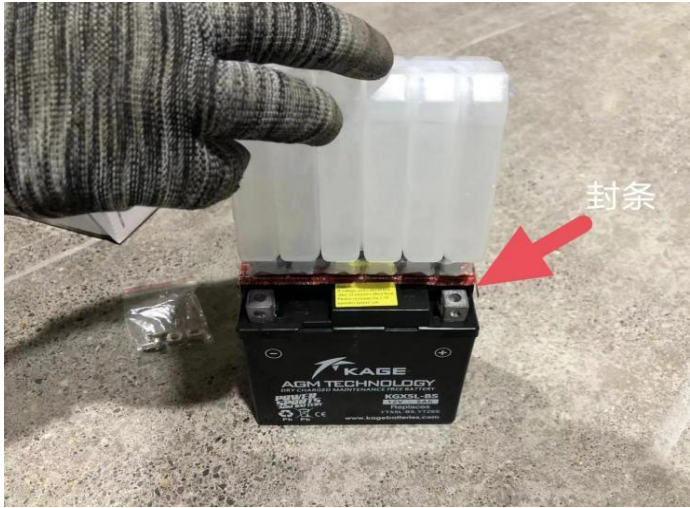
21. Install the front wheel on the front hub, and use tool ⑤⑪ to tighten and fix front rim lock nut(P) (torque requirement) 60-68N. m)



22. Align the rear wheel with the splines and push on the rear axle, with the air nozzle cap facing outward, install the slotted nut, dust cap washer and spring washer(D), and use ①④ to lock them. Then insert the cotter pin(D), the bending angle is greater than 180°. (torque requirement is 77-92N.m)



23. Insert the rubber dust cover (G) into the position shown above of the front and rear wheels.



24. Take out the battery, according to the user's manual, first tear off the seal on the battery, add electrolyte, then install the battery cover, and wait for the subsequent installation into the battery box.



25. Pull the latch as above shown and remove the seat cushion, waiting for the subsequent installation of the battery



26. Use ①⑩ to remove the battery holder, install the battery and fix the battery holder, connect the positive and negative poles as shown in the picture, use tool ⑫ to tighten the screws, then install the seat. (Red is positive, black is negative)



27. Turn the fuel tank petcock to the position shown as above.



28. Unscrew the fuel tank cap, add gasoline, and tighten the fuel tank cap clockwise.



29. Please read the user's manual (A) carefully before riding to better understand the performance of the vehicle.