



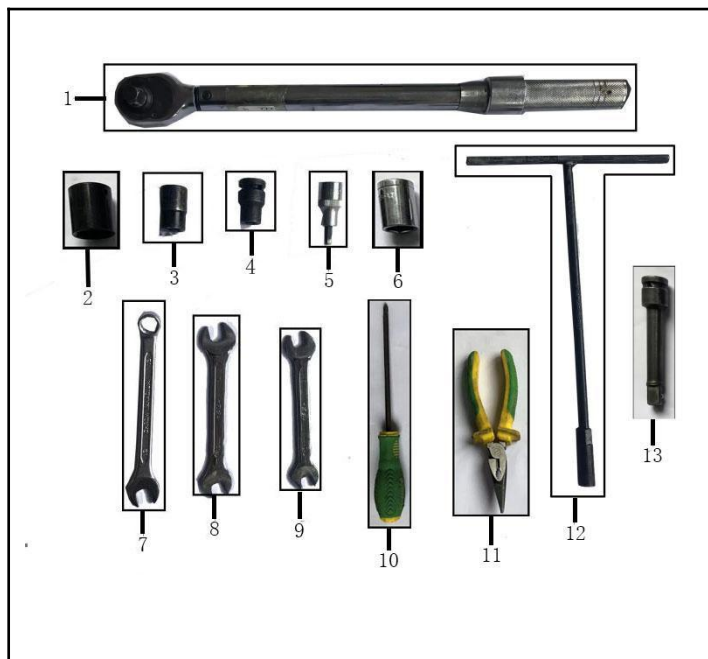
# KAYO MOTO

AY70-2

## Assembly Manual

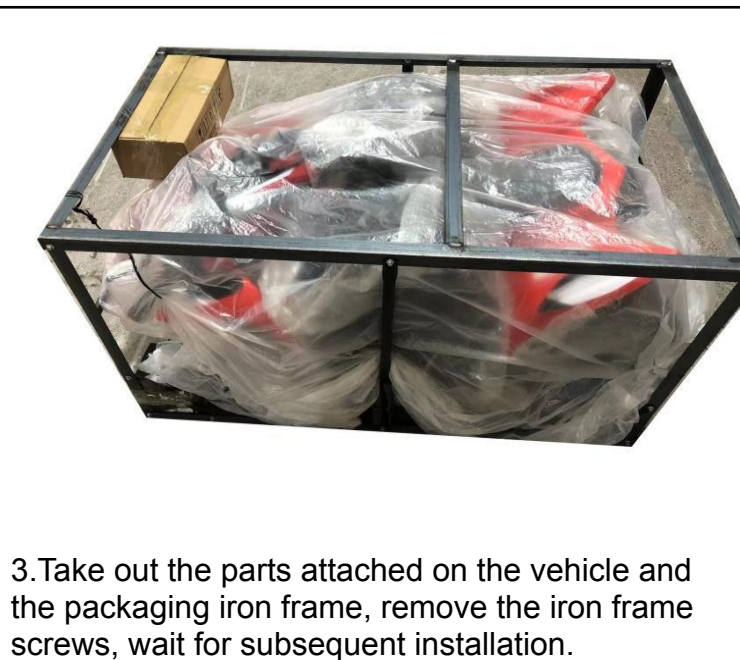


[WWW.KAYOMOTO.COM](http://WWW.KAYOMOTO.COM)



1.The picture on the left shows the tools required for unpacking & assembling the vehicle as below

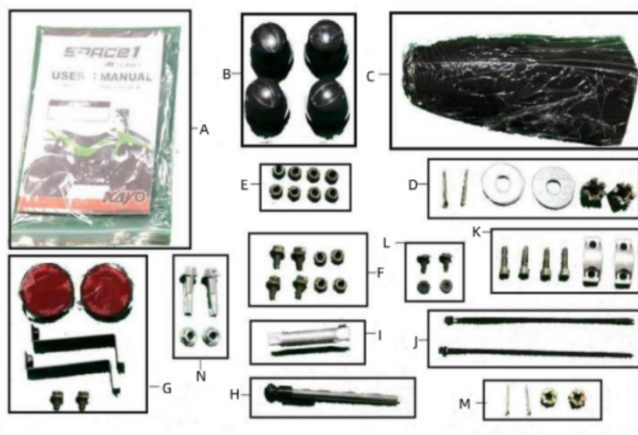
- ① Torque wrench
- ② 24mm socket
- ③ 14mm socket
- ④ 12mm socket
- ⑤ 6mm hexagon socket
- ⑥ 17mm socket
- ⑦ No.13 wrench
- ⑧ No.10-12 wrench
- ⑨ No.12-14 wrench
- ⑩ Phillips screwdriver
- ⑪ Needle nose pliers
- ⑫ No. 8 T-sleeve
- ⑬ Socket extension rod



3.Take out the parts attached on the vehicle and the packaging iron frame, remove the iron frame screws, wait for subsequent installation.



4.The parts shown above need to be subsequently installed on the vehicle.



5.The picture above shows the parts in the accessory box. Please read the user's manual (A) carefully before assembling and install these parts according to the operation steps.

	Name		Quantity
A	User's manual		1
B	Dust cover		4
C	Head cover		1
D	Rear wheel hub fixing hardware	cotter pin	2
		nut	2
		washer	2
E	Front rim nut		8
F	Bumper fixing bolt		4
	Nut		4
G	Rear reflector		2
	Bracket		2
	Screw		2
H	Air pressure gauge		1
I	Spark plug socket		1
J	Cable tie		2
K	Handlebar upper clamp		2
	Screw		4
L	Head cover screw		2
	Washer		2
M	Steering pull rod nut		2
	Cotter pin		2
N	Front shock absorber bolt		2
	Nut		2



6. Use tool ① ⑤ to lock the Handlebar upper clamps(K), the distance between the two ends of the mark is close, tighten evenly, first start by hand tightening all four clamp bolts  
Note: Torque requirement 25-30N.m



7.The handlebar is tilted 3-5°from the vertical to the rear after installation.



8.Remove the iron wire fixing the front frame and the packing frame.





9. Use tool ⑧⑨ to remove the bolts that fix the rear wheel axle and the packing frame.



10. Put the vehicle on the stand for easy installation of other accessories.



11. Use tool ①③⑦ to tighten the front shock absorber bolts(N).  
Note: Torque requirement 49-59N.m



12. Use tool ①⑥ to tighten the nut of the steering pull rod(M) and insert the cotter pin. Please make sure the bending angle is greater than 180°. Note: Torque requirement 49-59N.m



13. Use tool ①④ to tighten the bumper fixing bolts(F).  
Note: Torque requirement 25-30N.m



14. Use tool ⑧ to install the reflector(G) with bracket and screws in the position shown above.





15. Please refer to user's manual (A) for air pressure requirements. Use compressed air to inflate the tires, and use the air pressure gauge (H) to inflate to the standard value of 5psi.



16. Install the front wheel on the front hub, use tool ①③③ to tighten the nut(E).  
Note: Torque requirement 49-59N.m



17. Align the rear wheel with the splines and push on the rear axle, with the air nozzle cap facing outward. Use tool ①②③ to lock the nut and washer, then insert the cotter pin(D), keep the bending angle greater than 180°  
Note: Torque requirement 77-92N.m



18. Insert the dust cover(B) into the positions shown above.

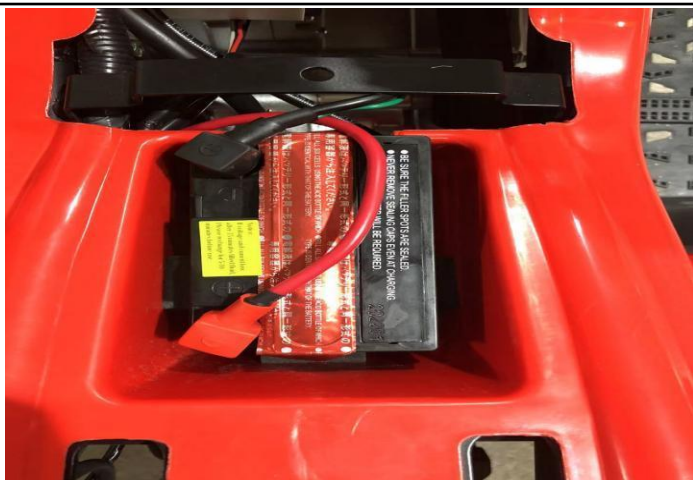


19. Pull the latch as above shown and remove the seat cushion, waiting for the subsequent installation of the battery.



20. Take out the battery, according to the user's manual (A), first tear off the seal on the battery, add electrolyte, then install the battery cover and wait for the subsequent installation into the battery box.





21. Connect the positive and negative poles as shown above, use tool ⑩ to tighten the bolts and re-install the seat.  
Note: red is positive, black is negative.



22. Use tool ⑩ to install the head cover(C) and bolts & washers(L).



23. Unscrew the fuel tank cap, add gasoline, then tighten the fuel tank cap clockwise.



24. Please read the user's manual(A) completely and carefully before riding to better understand the performance of the vehicle.